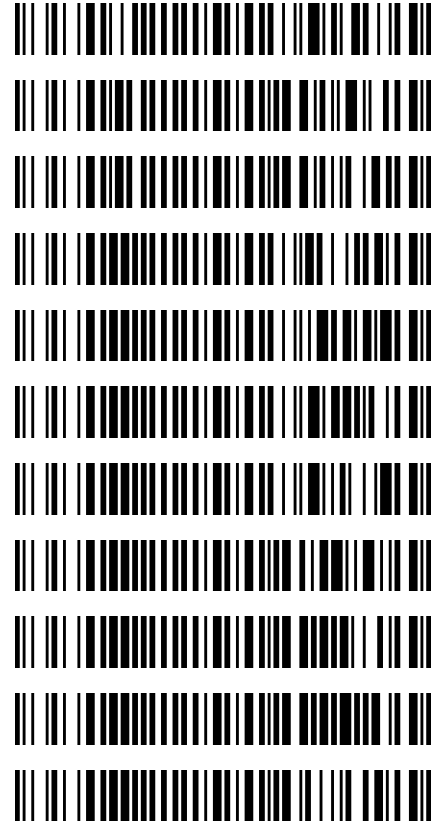


**Worklist: 2640**

<u>LAB_CASE</u>	<u>ITEM</u>	<u>TASK_ID</u>	<u>DESCRIPTION</u>
C2018-1468	4	124386	AM 3 Urine Carboxy-THC
M2018-3905	3	124394	AM 3 Urine Carboxy-THC
M2018-3988	3	124399	AM 3 Urine Carboxy-THC
P2018-1877	1	124387	AM 3 Urine Carboxy-THC
P2018-2103	1	124388	AM 3 Urine Carboxy-THC
P2018-2116	1	124389	AM 3 Urine Carboxy-THC
P2018-2124	1	124390	AM 3 Urine Carboxy-THC
P2018-2223	1	124391	AM 3 Urine Carboxy-THC
P2018-2248	1	124392	AM 3 Urine Carboxy-THC
P2018-2261	1	124393	AM 3 Urine Carboxy-THC
P2018-2317	1	124401	AM 3 Urine Carboxy-THC



Data Path : D:\am 3 worklist 2640\  
Data File : THC-PC1.D  
Acq On : 17 Aug 2018 10:14  
Operator : ISP\datastor  
Sample : Spiked Positive c-THC Control  
Misc : c-THC lot # 0497429 in Negative Lot # POC112116; Worklist 2640  
ALS Vial : 22 Sample Multiplier: 1

Integration Parameters: rteint.p  
Integrator: RTE  
Smoothing : ON Filtering: 5  
Sampling : 1 Min Area: 3 % of largest Peak  
Start Thrs: 0.2 Max Peaks: 100  
Stop Thrs : 0 Peak Location: TOP

If leading or trailing edge < 100 prefer < Baseline drop else tangent >  
Peak separation: 5

Method : C:\gcms\1\methods\TOX.M  
Title :

Signal : EIC Ion 371.00 (370.70 to 371.70): THC-PC1.D\data.ms

peak #	R.T. min	first scan	max scan	last scan	PK TY	peak height	corr. area	corr. % max.	% of total
1	5.806	68	77	96	rVB	111	177	3.76%	3.620%
2	6.672	362	378	397	rBV2	2494	4712	100.00%	96.380%

Sum of corrected areas: 4889  
Signal : EIC Ion 473.00 (472.70 to 473.70): THC-PC1.D\data.ms

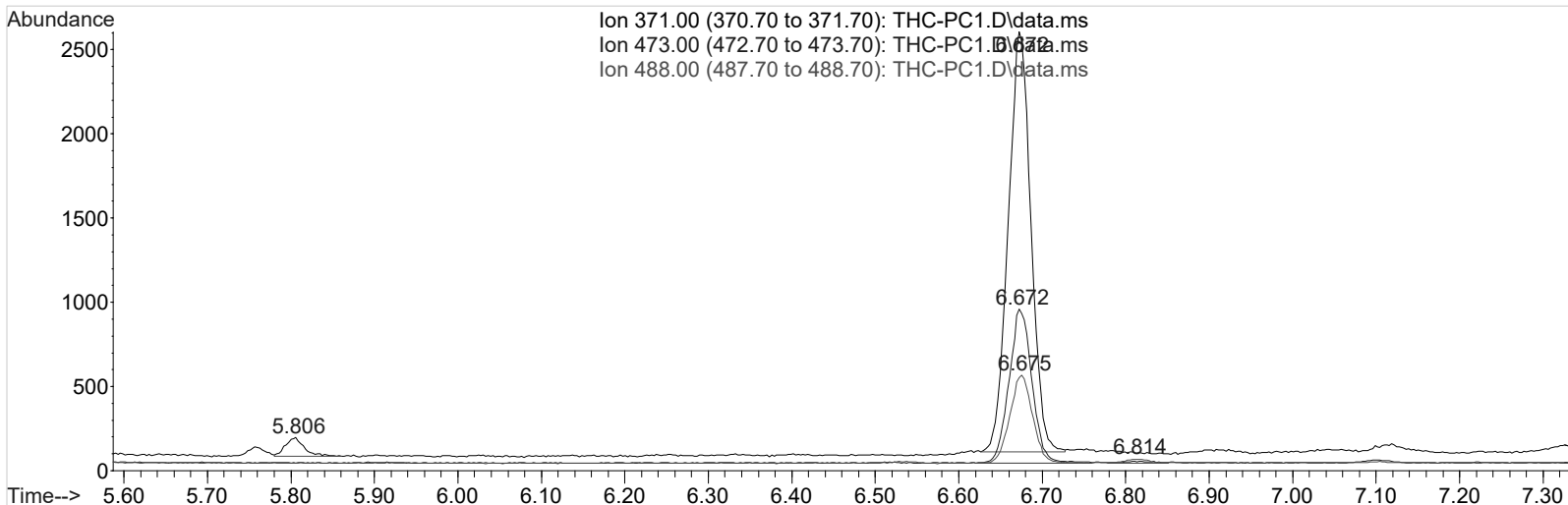
peak #	R.T. min	first scan	max scan	last scan	PK TY	peak height	corr. area	corr. % max.	% of total
1	6.672	360	378	408	rBV2	916	1764	100.00%	100.000%

Sum of corrected areas: 1764  
Signal : EIC Ion 488.00 (487.70 to 488.70): THC-PC1.D\data.ms

peak #	R.T. min	first scan	max scan	last scan	PK TY	peak height	corr. area	corr. % max.	% of total
1	6.675	361	379	402	rBV2	522	993	100.00%	95.757%
2	6.814	415	427	440	rBV3	23	44	4.43%	4.243%

Sum of corrected areas: 1037

TOX.M Tue Aug 21 11:53:24 2018



Data Path : D:\am 3 worklist 2640\  
Data File : THC-PC2.D  
Acq On : 17 Aug 2018 15:06  
Operator : ISP\datastor  
Sample : Spiked Positive c-THC Control  
Misc : c-THC lot # 0497429 in Negative Lot # POC112116; Worklist AM #3; Worklist 2640  
ALS Vial : 22 Sample Multiplier: 1

Integration Parameters: rteint.p  
Integrator: RTE  
Smoothing : ON Filtering: 5  
Sampling : 1 Min Area: 3 % of largest Peak  
Start Thrs: 0.2 Max Peaks: 100  
Stop Thrs : 0 Peak Location: TOP

If leading or trailing edge < 100 prefer < Baseline drop else tangent >  
Peak separation: 5

Method : C:\gcms\1\methods\TOX.M  
Title :

Signal : EIC Ion 371.00 (370.70 to 371.70): THC-PC2.D\data.ms

peak #	R.T. min	first scan	max scan	last scan	PK TY	peak height	corr. area	corr. % max.	% of total
1	5.797	66	74	85	rVB	93	135	3.11%	3.019%
2	6.667	360	376	396	rVB2	2333	4337	100.00%	96.981%

Sum of corrected areas: 4472  
Signal : EIC Ion 473.00 (472.70 to 473.70): THC-PC2.D\data.ms

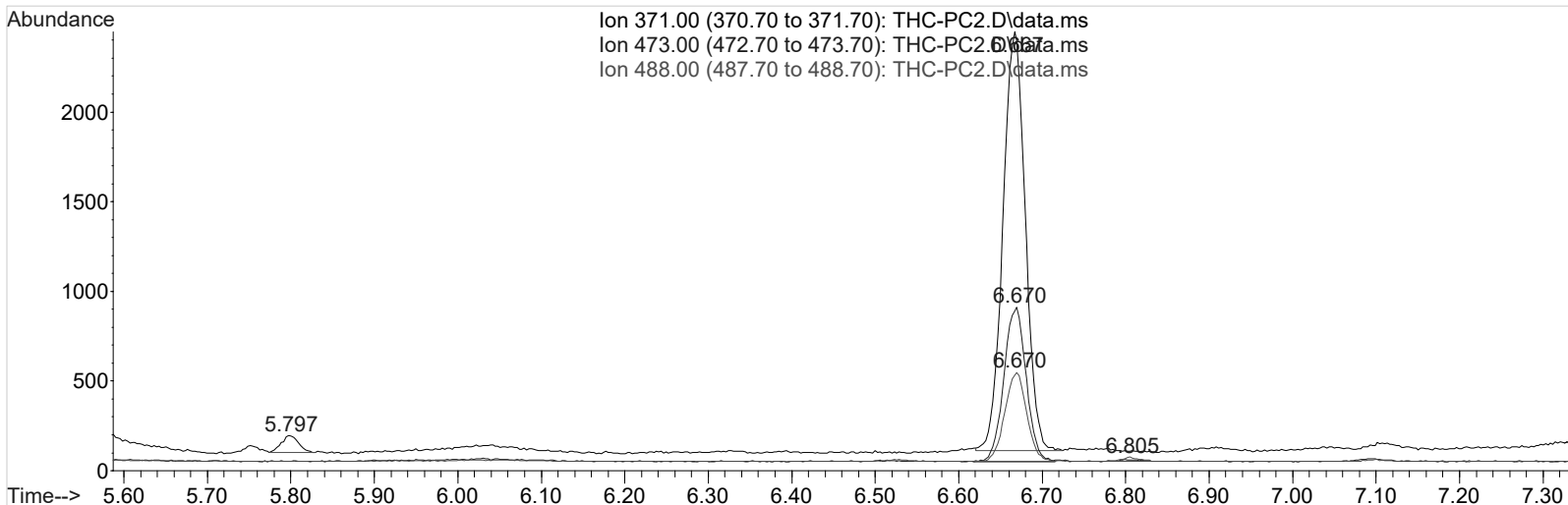
peak #	R.T. min	first scan	max scan	last scan	PK TY	peak height	corr. area	corr. % max.	% of total
1	6.670	359	377	392	rBV2	859	1590	100.00%	100.000%

Sum of corrected areas: 1590  
Signal : EIC Ion 488.00 (487.70 to 488.70): THC-PC2.D\data.ms

peak #	R.T. min	first scan	max scan	last scan	PK TY	peak height	corr. area	corr. % max.	% of total
1	6.670	359	377	393	rBV2	498	916	100.00%	95.916%
2	6.805	414	424	438	rVB3	25	39	4.26%	4.084%

Sum of corrected areas: 955

TOX.M Tue Aug 21 11:53:41 2018



Data Path : D:\am 3 worklist 2640\  
 Data File : NC.D  
 Acq On : 17 Aug 2018 09:51  
 Operator : ISP\datastor  
 Sample : Negative c-THC Control  
 Misc : ~~c-THC lot # 0497429 in~~ Negative Lot # POC112116; Worklist 2640  
 ALS Vial : 21 Sample Multiplier: 1

Integration Parameters: rteint.p  
 Integrator: RTE  
 Smoothing : ON  
 Sampling : 1  
 Start Thrs: 0.2  
 Stop Thrs : 0

Filtering: 5  
 Min Area: 3 % of largest Peak  
 Max Peaks: 100  
 Peak Location: TOP

If leading or trailing edge < 100 prefer < Baseline drop else tangent >  
 Peak separation: 5

Method : C:\gcms\1\methods\TOX.M  
 Title :

Signal : EIC Ion 371.00 (370.70 to 371.70): NC.D\data.ms

peak #	R.T. min	first scan	max scan	last scan	PK TY	peak height	corr. area	corr. % max.	% of total
1	5.639	18	19	24	rBV	9	5	45.45%	2.392%
2	5.789	69	71	75	rBB2	4	2	18.18%	0.957%
3	5.878	100	102	105	rBV	8	5	45.45%	2.392%
4	5.904	108	111	115	rVB	8	5	45.45%	2.392%
5	5.936	121	122	130	rBV3	9	8	72.73%	3.828%
6	5.996	142	143	146	rBV2	6	2	18.18%	0.957%
7	6.056	162	164	166	rVB2	7	2	18.18%	0.957%
8	6.068	167	168	171	rVB	5	1	9.09%	0.478%
9	6.091	173	176	179	rVV3	6	3	27.27%	1.435%
10	6.114	183	184	190	rVB2	6	5	45.45%	2.392%
11	6.146	194	195	200	rBV	5	4	36.36%	1.914%
12	6.163	200	201	205	rVB2	6	3	27.27%	1.435%
13	6.183	205	208	212	rBB2	3	2	18.18%	0.957%
14	6.200	212	214	215	rBV2	4	1	9.09%	0.478%
15	6.212	216	218	219	rBB2	4	1	9.09%	0.478%
16	6.246	227	230	233	rBV2	7	3	27.27%	1.435%
17	6.258	233	234	238	rVB	5	3	27.27%	1.435%
18	6.290	241	245	247	rVB3	5	2	18.18%	0.957%
19	6.307	250	251	257	rVB2	7	5	45.45%	2.392%
20	6.327	257	258	260	rBV	7	3	27.27%	1.435%
21	6.344	263	264	267	rBB	3	1	9.09%	0.478%
22	6.373	272	274	276	rBV2	4	2	18.18%	0.957%
23	6.388	277	279	280	rBV	3	1	9.09%	0.478%
24	6.408	285	286	288	rVB2	4	1	9.09%	0.478%
25	6.416	288	289	292	rVB2	4	2	18.18%	0.957%
26	6.431	292	294	295	rBV	3	1	9.09%	0.478%
27	6.439	295	297	300	rBB	3	2	18.18%	0.957%
28	6.454	300	302	303	rBV	3	1	9.09%	0.478%
29	6.483	309	312	313	rVB	8	3	27.27%	1.435%
30	6.488	313	314	316	rBV	7	3	27.27%	1.435%
31	6.506	317	320	322	rVV2	7	4	36.36%	1.914%
32	6.526	326	327	331	rVV2	5	3	27.27%	1.435%
33	6.552	333	336	338	rVV2	6	3	27.27%	1.435%
34	6.560	338	339	342	rVB2	4	2	18.18%	0.957%
35	6.580	342	346	355	rBV2	5	8	72.73%	3.828%
36	6.624	360	361	362	rBV	6	1	9.09%	0.478%
37	6.644	366	368	369	rVB2	6	2	18.18%	0.957%
38	6.673	375	378	382	rVB2	6	4	36.36%	1.914%
39	6.690	382	384	386	rBV2	7	3	27.27%	1.435%
40	6.710	389	391	394	rVV2	5	2	18.18%	0.957%

g

41	6.730	394	398	400	rVV	4	3	27.27%	1.435%
42	6.747	400	404	409	rVB2	8	7	63.64%	3.349%
43	6.770	409	412	417	rBV2	7	5	45.45%	2.392%
44	6.799	418	422	425	rBB2	5	3	27.27%	1.435%
45	6.817	425	428	430	rBV3	6	2	18.18%	0.957%
46	6.837	433	435	437	rBB	4	2	18.18%	0.957%
47	6.848	437	439	445	rVB	6	6	54.55%	2.871%
48	6.880	445	450	454	rBV2	9	8	72.73%	3.828%
49	6.900	454	457	461	rBV3	6	4	36.36%	1.914%
50	6.926	465	466	468	rVB	6	2	18.18%	0.957%
51	6.955	468	476	480	rBV3	10	11	100.00%	5.263%
52	6.978	480	484	485	rVB2	5	3	27.27%	1.435%
53	6.995	485	490	491	rBV2	5	4	36.36%	1.914%
54	7.004	492	493	496	rVB3	5	2	18.18%	0.957%
55	7.015	496	497	499	rBV	5	2	18.18%	0.957%
56	7.024	499	500	502	rBV	3	1	9.09%	0.478%
57	7.064	510	514	517	rBB3	5	3	27.27%	1.435%
58	7.084	517	521	523	rBB3	5	3	27.27%	1.435%
59	7.110	527	530	533	rBV2	5	3	27.27%	1.435%
60	7.168	548	550	552	rBV3	3	1	9.09%	0.478%
61	7.185	555	556	560	rVV2	5	2	18.18%	0.957%
62	7.205	561	563	566	rVB	3	2	18.18%	0.957%
63	7.220	566	568	570	rBB3	5	1	9.09%	0.478%
64	7.237	572	574	580	rVB2	8	5	45.45%	2.392%
65	7.260	580	582	586	rBV2	4	3	27.27%	1.435%
66	7.274	586	587	590	rBB	2	1	9.09%	0.478%
67	7.292	590	593	597	rVB3	5	3	27.27%	1.435%
68	7.315	597	601	602	rBV2	6	3	27.27%	1.435%

Sum of corrected areas: 209

Signal : EIC Ion 473.00 (472.70 to 473.70): NC.D\data.ms

peak #	R.T. min	first scan	max scan	last scan	PK TY	peak height	corr. area	corr. % max.	% of total
1	5.653	22	24	26	rBB3	4	1	25.00%	0.862%
2	5.734	51	52	56	rBV3	3	2	50.00%	1.724%
3	5.769	63	64	65	rVB	3	1	25.00%	0.862%
4	5.777	65	67	68	rBB	4	1	25.00%	0.862%
5	5.789	70	71	74	rVV2	4	1	25.00%	0.862%
6	5.803	75	76	79	rVB2	3	1	25.00%	0.862%
7	5.843	89	90	93	rVB	3	2	50.00%	1.724%
8	5.881	98	103	109	rVB2	3	4	100.00%	3.448%
9	5.924	116	118	120	rBV2	4	2	50.00%	1.724%
10	5.941	122	124	127	rVB	4	2	50.00%	1.724%
11	5.984	138	139	143	rBB2	2	1	25.00%	0.862%
12	6.008	145	147	151	rBV3	5	3	75.00%	2.586%
13	6.025	151	153	160	rBB2	3	3	75.00%	2.586%
14	6.051	161	162	165	rBV2	3	2	50.00%	1.724%
15	6.123	185	187	189	rBB2	3	1	25.00%	0.862%
16	6.131	189	190	193	rBB2	4	1	25.00%	0.862%
17	6.186	206	209	214	rBB2	4	2	50.00%	1.724%
18	6.209	214	217	220	rBB3	2	1	25.00%	0.862%
19	6.235	224	226	229	rVB2	4	2	50.00%	1.724%
20	6.246	229	230	233	rBB	2	1	25.00%	0.862%
21	6.258	233	234	235	rBV	4	1	25.00%	0.862%
22	6.284	242	243	247	rBB2	1	1	25.00%	0.862%
23	6.310	250	252	255	rBB2	3	1	25.00%	0.862%
24	6.324	256	257	261	rBB2	3	1	25.00%	0.862%
25	6.344	262	264	266	rBB2	2	1	25.00%	0.862%
26	6.353	266	267	273	rBB	3	2	50.00%	1.724%
27	6.376	274	275	278	rVB2	3	1	25.00%	0.862%
28	6.390	278	280	282	rBB3	3	1	25.00%	0.862%

8

29	6.413	285	288	290	rBV2	3	2	50.00%	1.724%
30	6.425	290	292	294	rBB3	2	1	25.00%	0.862%
31	6.439	294	297	299	rVB	4	2	50.00%	1.724%
32	6.460	299	304	308	rBV3	4	4	100.00%	3.448%
33	6.483	309	312	315	rVB2	3	2	50.00%	1.724%
34	6.494	315	316	318	rBB	2	1	25.00%	0.862%
35	6.511	318	322	326	rBV2	4	3	75.00%	2.586%
36	6.537	330	331	335	rBV2	3	1	25.00%	0.862%
37	6.569	339	342	345	rBV3	3	2	50.00%	1.724%
38	6.580	345	346	348	rVB2	3	1	25.00%	0.862%
39	6.601	350	353	354	rBV2	3	1	25.00%	0.862%
40	6.627	361	362	364	rBV2	3	1	25.00%	0.862%
41	6.650	369	370	373	rVB2	2	1	25.00%	0.862%
42	6.664	373	375	378	rBV	3	2	50.00%	1.724%
43	6.681	379	381	383	rBB2	2	1	25.00%	0.862%
44	6.696	384	386	388	rVB2	3	1	25.00%	0.862%
45	6.704	388	389	391	rBV	2	1	25.00%	0.862%
46	6.742	401	402	406	rBV2	2	1	25.00%	0.862%
47	6.779	410	415	417	rVB2	4	2	50.00%	1.724%
48	6.808	420	425	432	rBB3	3	4	100.00%	3.448%
49	6.831	432	433	435	rBV	2	1	25.00%	0.862%
50	6.842	436	437	439	rVV	3	1	25.00%	0.862%
51	6.851	439	440	442	rVV2	3	1	25.00%	0.862%
52	6.860	442	443	446	rVB	2	1	25.00%	0.862%
53	6.871	446	447	452	rBB2	2	2	50.00%	1.724%
54	6.897	452	456	458	rBV3	4	2	50.00%	1.724%
55	6.906	458	459	461	rVV	2	1	25.00%	0.862%
56	6.926	465	466	469	rVV	3	1	25.00%	0.862%
57	6.952	473	475	478	rBV3	4	1	25.00%	0.862%
58	6.966	478	480	481	rBB	2	1	25.00%	0.862%
59	6.978	483	484	486	rBV	4	1	25.00%	0.862%
60	7.007	490	494	498	rVB3	3	2	50.00%	1.724%
61	7.030	500	502	506	rBB2	3	2	50.00%	1.724%
62	7.056	506	511	514	rBB2	3	2	50.00%	1.724%
63	7.067	514	515	521	rBB2	2	2	50.00%	1.724%
64	7.087	521	522	526	rBB3	3	2	50.00%	1.724%
65	7.110	526	530	532	rBV2	4	2	50.00%	1.724%
66	7.128	534	536	538	rBB2	2	1	25.00%	0.862%
67	7.179	550	554	555	rBV3	2	1	25.00%	0.862%
68	7.191	557	558	560	rVV	3	1	25.00%	0.862%
69	7.205	560	563	564	rVB2	3	1	25.00%	0.862%
70	7.214	564	566	568	rBV	4	1	25.00%	0.862%
71	7.223	568	569	573	rVV3	2	2	50.00%	1.724%
72	7.237	573	574	576	rVB2	3	1	25.00%	0.862%
73	7.251	577	579	581	rBB2	2	1	25.00%	0.862%
74	7.260	581	582	586	rVB2	2	1	25.00%	0.862%
75	7.277	586	588	589	rBB2	2	1	25.00%	0.862%
76	7.283	589	590	596	rBB2	3	2	50.00%	1.724%
77	7.303	596	597	599	rBV2	2	1	25.00%	0.862%

Sum of corrected areas: 116

Signal : EIC Ion 488.00 (487.70 to 488.70): NC.D\data.ms

peak #	R.T. min	first scan	max scan	last scan	PK TY	peak height	corr. area	corr. % max.	% of total
1	5.607	5	8	9	rBV2	3	1	20.00%	0.741%
2	5.619	11	12	15	rVB2	4	1	20.00%	0.741%
3	5.630	15	16	18	rBV2	4	1	20.00%	0.741%
4	5.694	37	38	42	rVB2	4	2	40.00%	1.481%
5	5.711	42	44	47	rBV2	4	2	40.00%	1.481%
6	5.728	48	50	51	rBB2	2	1	20.00%	0.741%
7	5.737	51	53	56	rBV3	3	2	40.00%	1.481%

CS

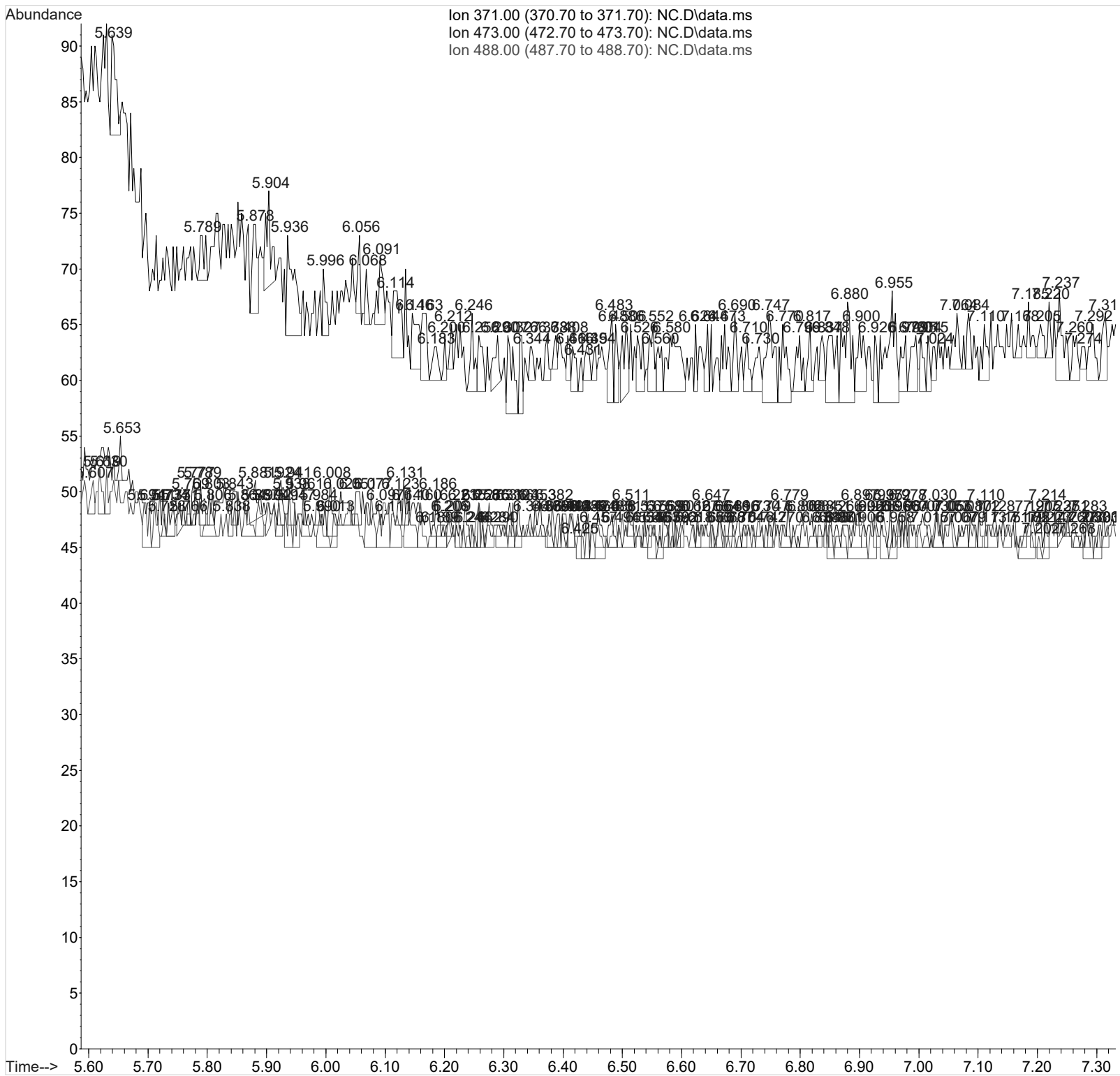
8	5.751	57	58	61	rVB2	2	1	20.00%	0.741%
9	5.766	62	63	66	rBB2	1	1	20.00%	0.741%
10	5.806	72	77	80	rBB2	3	2	40.00%	1.481%
11	5.838	87	88	90	rBV2	2	1	20.00%	0.741%
12	5.864	95	97	103	rBB2	3	2	40.00%	1.481%
13	5.887	103	105	108	rBV2	3	2	40.00%	1.481%
14	5.904	109	111	112	rVB	3	1	20.00%	0.741%
15	5.921	115	117	119	rBV2	3	1	20.00%	0.741%
16	5.938	120	123	125	rVB3	5	2	40.00%	1.481%
17	5.947	125	126	129	rBV	4	2	40.00%	1.481%
18	5.961	130	131	136	rBB2	4	1	20.00%	0.741%
19	5.990	139	141	147	rVB2	3	2	40.00%	1.481%
20	6.013	147	149	151	rBV2	3	1	20.00%	0.741%
21	6.077	167	171	174	rBV2	5	3	60.00%	2.222%
22	6.097	174	178	182	rVB3	4	4	80.00%	2.963%
23	6.111	182	183	189	rBV3	3	3	60.00%	2.222%
24	6.140	190	193	198	rVV3	4	3	60.00%	2.222%
25	6.160	198	200	204	rVB3	4	2	40.00%	1.481%
26	6.180	204	207	209	rBV2	2	1	20.00%	0.741%
27	6.189	209	210	215	rVV2	2	2	40.00%	1.481%
28	6.206	215	216	218	rVB2	2	1	20.00%	0.741%
29	6.221	220	221	224	rBB	4	1	20.00%	0.741%
30	6.244	226	229	231	rBB2	2	1	20.00%	0.741%
31	6.258	231	234	238	rBB	4	2	40.00%	1.481%
32	6.275	238	240	243	rBV2	4	2	40.00%	1.481%
33	6.290	244	245	251	rVB	2	2	40.00%	1.481%
34	6.316	251	254	259	rBV3	4	2	40.00%	1.481%
35	6.382	273	277	280	rVB3	4	2	40.00%	1.481%
36	6.399	280	283	286	rBV3	3	2	40.00%	1.481%
37	6.411	286	287	291	rVB2	3	2	40.00%	1.481%
38	6.425	291	292	296	rVB3	2	1	20.00%	0.741%
39	6.442	296	298	302	rBV	4	2	40.00%	1.481%
40	6.457	302	303	308	rBB2	2	1	20.00%	0.741%
41	6.488	308	314	315	rBV2	3	2	40.00%	1.481%
42	6.511	321	322	325	rBB2	2	1	20.00%	0.741%
43	6.534	329	330	333	rBB2	2	1	20.00%	0.741%
44	6.546	333	334	338	rVB2	3	2	40.00%	1.481%
45	6.563	338	340	342	rBV2	3	1	20.00%	0.741%
46	6.578	342	345	347	rBV2	2	1	20.00%	0.741%
47	6.592	349	350	352	rBV	2	1	20.00%	0.741%
48	6.618	357	359	361	rBB	2	1	20.00%	0.741%
49	6.647	361	369	372	rBB3	4	3	60.00%	2.222%
50	6.664	372	375	377	rBB2	3	1	20.00%	0.741%
51	6.673	377	378	381	rBB	2	1	20.00%	0.741%
52	6.687	382	383	385	rBB2	2	1	20.00%	0.741%
53	6.704	385	389	394	rBB3	2	2	40.00%	1.481%
54	6.730	394	398	402	rBB2	3	2	40.00%	1.481%
55	6.747	403	404	407	rBB	3	1	20.00%	0.741%
56	6.770	411	412	417	rBB2	2	1	20.00%	0.741%
57	6.802	417	423	427	rBB3	3	3	60.00%	2.222%
58	6.848	438	439	442	rVB	3	1	20.00%	0.741%
59	6.871	442	447	450	rBB2	3	3	60.00%	2.222%
60	6.906	450	459	462	rBB3	4	5	100.00%	3.704%
61	6.920	462	464	467	rBV2	4	2	40.00%	1.481%
62	6.937	469	470	474	rVB2	5	2	40.00%	1.481%
63	6.958	474	477	479	rBV3	3	2	40.00%	1.481%
64	6.966	479	480	481	rBB	3	1	20.00%	0.741%
65	6.984	485	486	491	rBV2	3	2	40.00%	1.481%
66	7.015	494	497	499	rBV2	2	1	20.00%	0.741%
67	7.030	500	502	506	rVB2	4	2	40.00%	1.481%
68	7.053	506	510	513	rBB3	3	2	40.00%	1.481%
69	7.079	514	519	525	rBV3	2	3	60.00%	2.222%
70	7.102	526	527	529	rVV2	3	1	20.00%	0.741%

CS

71	7.113	530	531	538	rVB3	2	2	40.00%	1.481%
72	7.151	541	544	546	rBV2	2	1	20.00%	0.741%
73	7.185	550	556	560	rBV2	3	3	60.00%	2.222%
74	7.202	561	562	564	rVB2	2	1	20.00%	0.741%
75	7.214	564	566	568	rBV	3	2	40.00%	1.481%
76	7.263	582	583	588	rBB2	1	1	20.00%	0.741%
77	7.283	588	590	594	rVB2	3	2	40.00%	1.481%
78	7.303	594	597	599	rBV2	3	2	40.00%	1.481%
79	7.318	599	602	603	rBV3	2	1	20.00%	0.741%

Sum of corrected areas: 135

TOX.M Tue Aug 21 13:01:37 2018





Data Path : D:\am 3 worklist 2640\  
 Data File : THC-C3.D  
 Acq On : 17 Aug 2018 10:37  
 Operator : ISP\datastor  
 Sample : Biorad C3 Control  
 Misc : C3 Lot # 68440; Worklist 2640  
 ALS Vial : 23 Sample Multiplier: 1

Integration Parameters: rteint.p  
 Integrator: RTE  
 Smoothing : ON  
 Sampling : 1  
 Start Thrs: 0.2  
 Stop Thrs : 0

Filtering: 5  
 Min Area: 3 % of largest Peak  
 Max Peaks: 100  
 Peak Location: TOP

If leading or trailing edge < 100 prefer < Baseline drop else tangent >  
 Peak separation: 5

Method : C:\gcms\1\methods\TOX.M  
 Title :

Signal : EIC Ion 371.00 (370.70 to 371.70): THC-C3.D\data.ms

peak #	R.T. min	first scan	max scan	last scan	PK TY	peak height	corr. area	corr. % max.	% of total
1	5.754	52	59	67	rBV	43	64	5.84%	4.384%
2	5.800	67	75	94	rVB	118	187	17.08%	12.808%
3	6.672	364	378	394	rVB2	573	1095	100.00%	75.000%
4	7.044	497	507	519	rBV2	58	114	10.41%	7.808%

Sum of corrected areas: 1460  
 Signal : EIC Ion 473.00 (472.70 to 473.70): THC-C3.D\data.ms

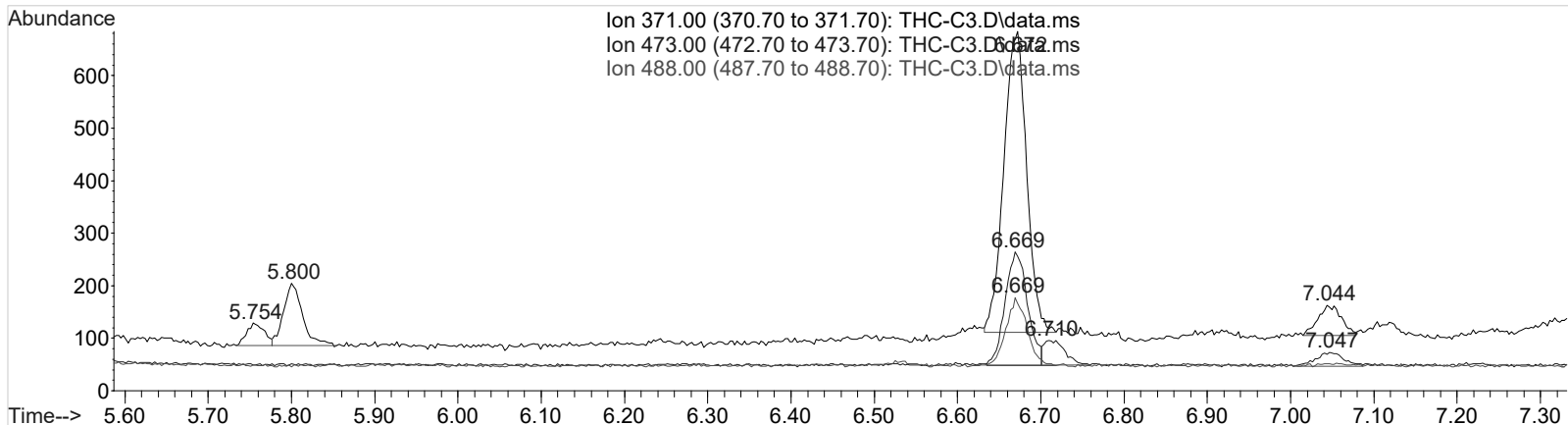
peak #	R.T. min	first scan	max scan	last scan	PK TY	peak height	corr. area	corr. % max.	% of total
1	6.669	361	377	388	rBV2	215	408	100.00%	74.317%
2	6.710	388	391	408	rVB2	47	81	19.85%	14.754%
3	7.047	493	508	522	rBV2	26	60	14.71%	10.929%

Sum of corrected areas: 549  
 Signal : EIC Ion 488.00 (487.70 to 488.70): THC-C3.D\data.ms

peak #	R.T. min	first scan	max scan	last scan	PK TY	peak height	corr. area	corr. % max.	% of total
1	6.669	365	377	394	rVB2	129	228	100.00%	100.000%

Sum of corrected areas: 228

TOX.M Tue Aug 21 11:52:40 2018



AM 3 carboxy-THC Calculations Sheet

**Run Date:** 8/17/2018

**Worklist #:** 2640

**Laboratory Case #:** BioRad C3 Lot: 68440

**Case Calculations:**

EIC Ion 371 Corr. Area: 1095

EIC Ion 473 Corr. Area: 408

473:371 Ratio: **0.373**

488:371 Ratio: **0.208**

EIC Ion 488 Corr. Area: 228

**Quality Control Calculations:**

**1st Control**

**2nd Control**

EIC Ion 371 Corr. Area: 4712

4337

EIC Ion 473 Corr. Area: 1764

1590

EIC Ion 488 Corr. Area: 993

916

Ratio of 473:371: 0.374

0.367

Average: 0.370

Ratio of 488:371: 0.211

0.211

Average: 0.211

**Acceptable Retention Time Range:** 6.574

to 6.768

**Approximate Minimum Corrected Area of 371 Ion:** 942

**Acceptable 473:371 Ratio Range:** 0.296

to 0.445

**Acceptable 488:371 Ratio Range:** 0.169

to 0.253